

**MMP28 Antibody (Center)**  
**Affinity Purified Rabbit Polyclonal Antibody (Pab)**  
**Catalog # AP13734c****Specification**

---

**MMP28 Antibody (Center) - Product Information**

Application	IHC-P, WB,E
Primary Accession	<a href="#">O9H239</a>
Other Accession	<a href="#">NP_001027449.1</a> , <a href="#">NP_077278.1</a>
Reactivity	Human
Host	Rabbit
Clonality	Polyclonal
Isotype	Rabbit IgG
Calculated MW	58939
Antigen Region	195-223

**MMP28 Antibody (Center) - Additional Information****Gene ID** 79148**Other Names**

Matrix metalloproteinase-28, MMP-28, 3424-, Epilysin, MMP28, MMP25

**Target/Specificity**

This MMP28 antibody is generated from rabbits immunized with a KLH conjugated synthetic peptide between 195-223 amino acids from the Central region of human MMP28.

**Dilution**

IHC-P~~1:10~50

WB~~1:1000

E~~Use at an assay dependent concentration.

**Format**

Purified polyclonal antibody supplied in PBS with 0.09% (W/V) sodium azide. This antibody is purified through a protein A column, followed by peptide affinity purification.

**Storage**

Maintain refrigerated at 2-8°C for up to 2 weeks. For long term storage store at -20°C in small aliquots to prevent freeze-thaw cycles.

**Precautions**

MMP28 Antibody (Center) is for research use only and not for use in diagnostic or therapeutic procedures.

**MMP28 Antibody (Center) - Protein Information****Name** MMP28

**Synonyms** MMP25

**Function** Can degrade casein. Could play a role in tissues homeostasis and repair.

**Cellular Location**

Secreted, extracellular space, extracellular matrix

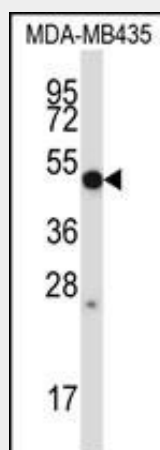
**Tissue Location**

Expressed at high levels in testes and lung. Low levels are detected in kidney, pancreas and skin. Also expressed in fetal lung, brain, skeletal muscle and kidney. Expressed selectively in keratinocytes. Widely expressed in several carcinomas as well. Is up- regulated in response to injury in the skin

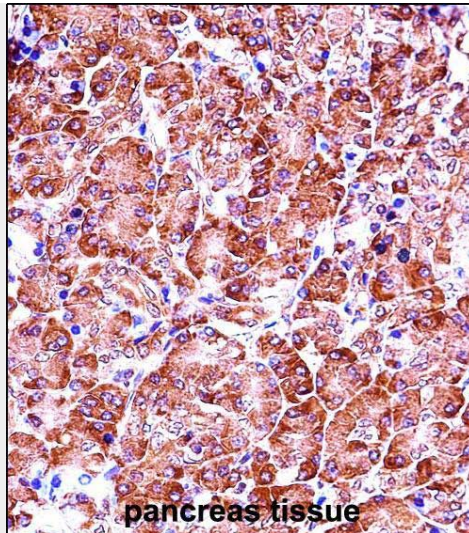
**MMP28 Antibody (Center) - Protocols**

Provided below are standard protocols that you may find useful for product applications.

- [Western Blot](#)
- [Blocking Peptides](#)
- [Dot Blot](#)
- [Immunohistochemistry](#)
- [Immunofluorescence](#)
- [Immunoprecipitation](#)
- [Flow Cytometry](#)
- [Cell Culture](#)

**MMP28 Antibody (Center) - Images**

MMP28 Antibody (Center) (Cat. #AP13734c) western blot analysis in MDA-MB435 cell line lysates (35ug/lane). This demonstrates the MMP28 antibody detected the MMP28 protein (arrow).



MMP28 Antibody (Center) (Cat. #AP13734c) immunohistochemistry analysis in formalin fixed and paraffin embedded human pancreas tissue followed by peroxidase conjugation of the secondary antibody and DAB staining. This data demonstrates the use of MMP28 Antibody (Center) for immunohistochemistry. Clinical relevance has not been evaluated.

#### **MMP28 Antibody (Center) - Background**

Proteins of the matrix metalloproteinase (MMP) family are involved in the breakdown of extracellular matrix for both normal physiological processes, such as embryonic development, reproduction and tissue remodeling, and disease processes, such as asthma and metastasis. This gene encodes a secreted enzyme that degrades casein. Its expression pattern suggests that it plays a role in tissue homeostasis and in wound repair. Transcript variants encoding different isoforms have been described. [provided by RefSeq].

#### **MMP28 Antibody (Center) - References**

Swingler, T.E., et al. Biochem. J. 427(3):391-400(2010)  
Suomela, S., et al. Virchows Arch. 455(6):495-503(2009)  
Rodgers, U.R., et al. Matrix Biol. 28(5):263-272(2009)  
Heiskanen, T.J., et al. Matrix Biol. 28(2):74-83(2009)  
Gruber, H.E., et al. Arthritis Res. Ther. 11 (6), R184 (2009) :